

# Parliamentary Staff

## - Legislative Support Agencies and Strengthening of Expertise of Their Staff

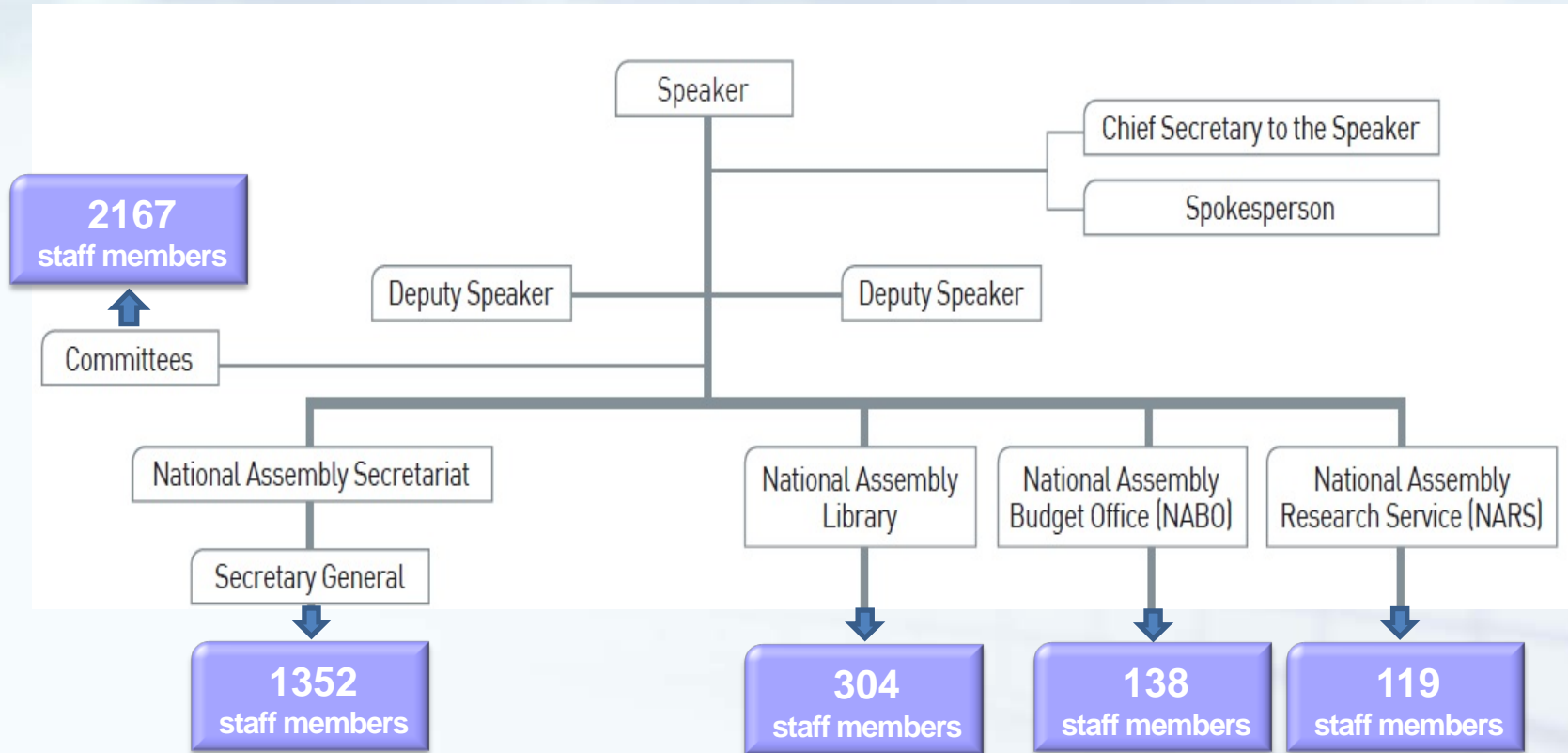
**Mr. WOO Yun-keun**

Secretary General

National Assembly of the Republic of Korea



# Structural organization of the Korean National Assembly



# Training/education programs for different audiences

## Executive lectures

- High ranking NA officials & Members of the National Assembly
- Humanities, national policies, future strategies, the Constitution, and etc.

## New employee orientation

- New employees
- 4 to 12 weeks of job-specific education/training programs

## Refresher & updating training

- Existing employees
- 30-60 hours per year on the Constitution, bill consideration, fiscal laws, and etc.

# Educational outreach service

For  
Local Councils

- Employees of 244 local councils
- Basic and in-depth courses on parliamentary procedures and bill consideration



# Educational outreach service

For  
the public

- Programs for the children, youth, college & law school students
- Mock NA session, professional parliamentary service course, parliamentary democracy course



# NA empowering future parliamentary leaders

## Constitution courses

- For the public, public servants, public sector employees
- Year-round courses on legislative procedures and budget bill consideration

## Future leaders courses

- For future parliamentary leaders
- Education/training on professional parliamentary service

**Future leaders with integrated knowledge and skills**

# Expertise building programs at different levels



# Expertise building practices

## Legislative Counseling Office

- Support bill drafting
- Peer-review on drafted bills
- Refine bill drafting skills through debates and feedback on drafted bills

## Parliamentary Proceedings Bureau

- Legislative research paper competition
- Translate experiential knowledge into academic knowledge
- Award-winning papers are published and disseminated



# Expertise building practices

## Standing committees

- Preliminary impact assessment of bills
- Bill review reports are issued and published
- Set exemplary standards for bill review

## National Assembly Budget Office

- Organize study groups according to expertise and research areas
- Publish research outcomes as fiscal reports
- Distribute the reports to colleges and think tanks at home and abroad

# Expertise building practices

## National Assembly Research Service

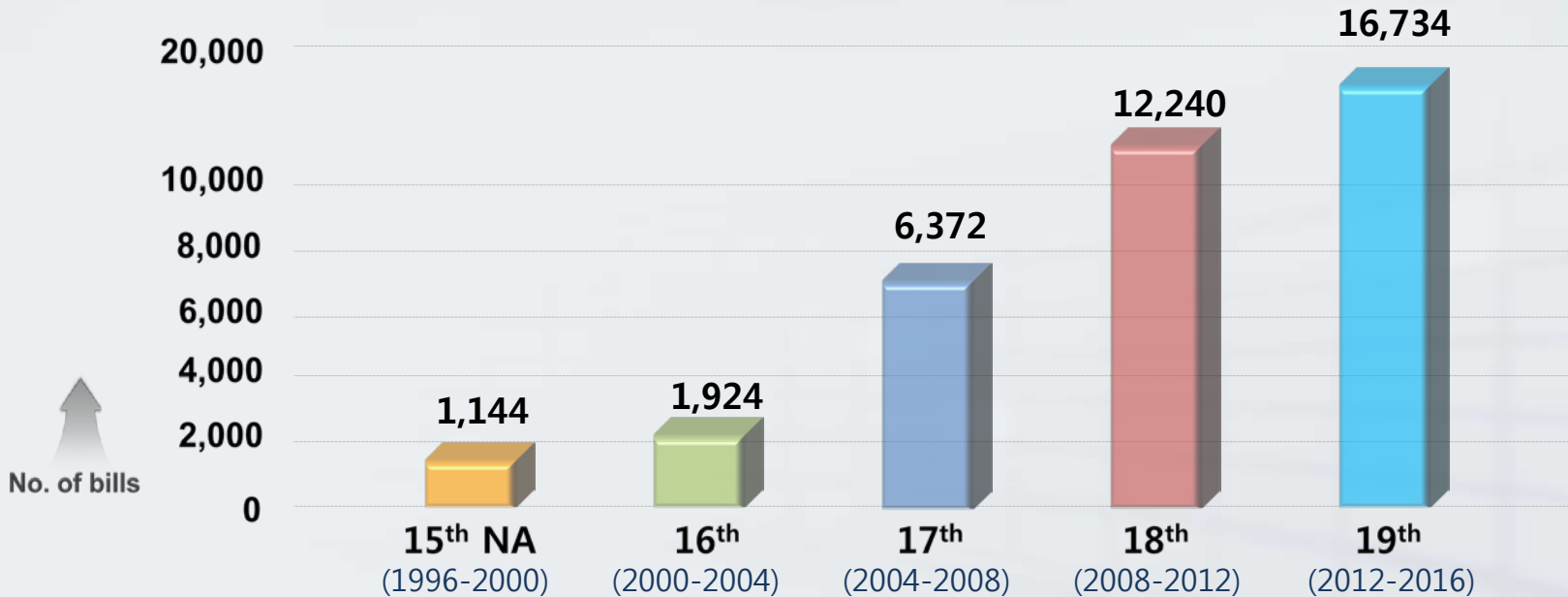
- Organize study groups according to expertise and research areas
- Publish research outcomes as legislative reports
- Distribute the reports to colleges and think tanks at home and abroad



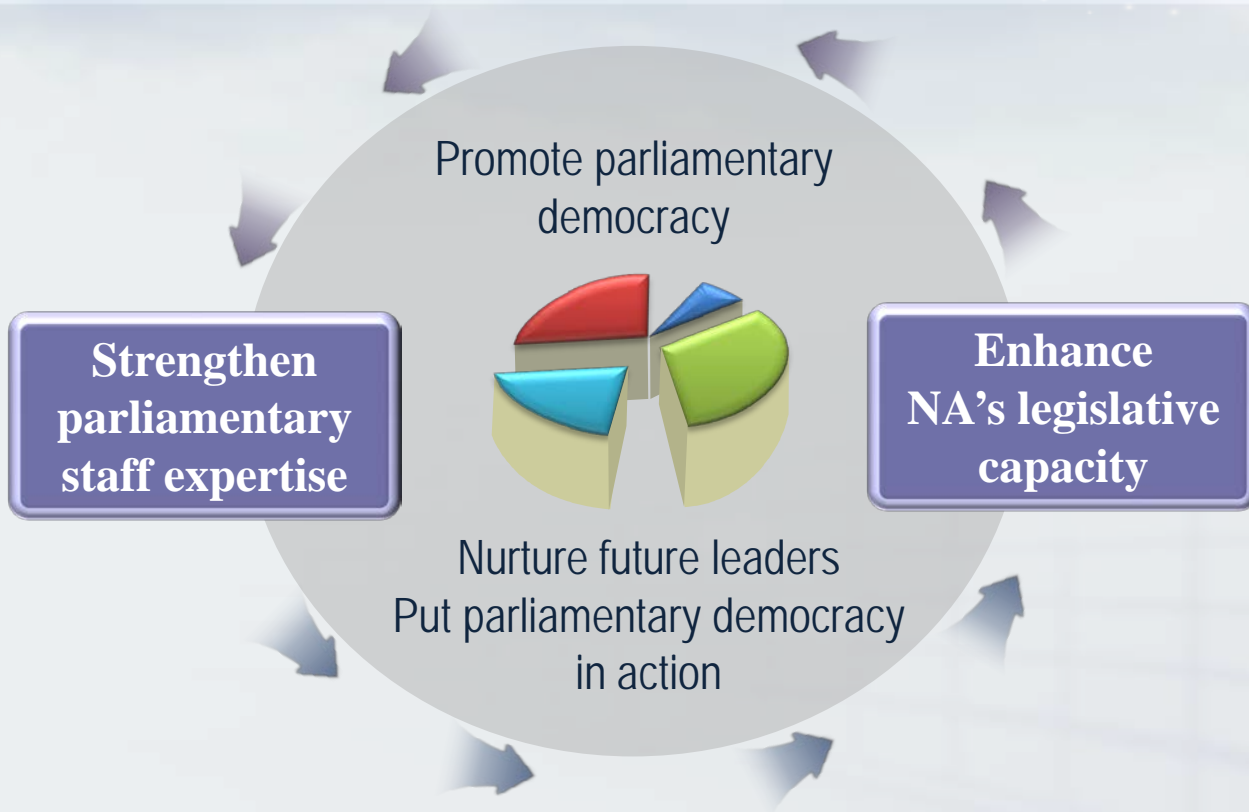
- Strengthen professional capabilities at the organizational levels
- Share and disseminate strengthened expertise within and out of organizations

# Legislative bills submitted by MPs

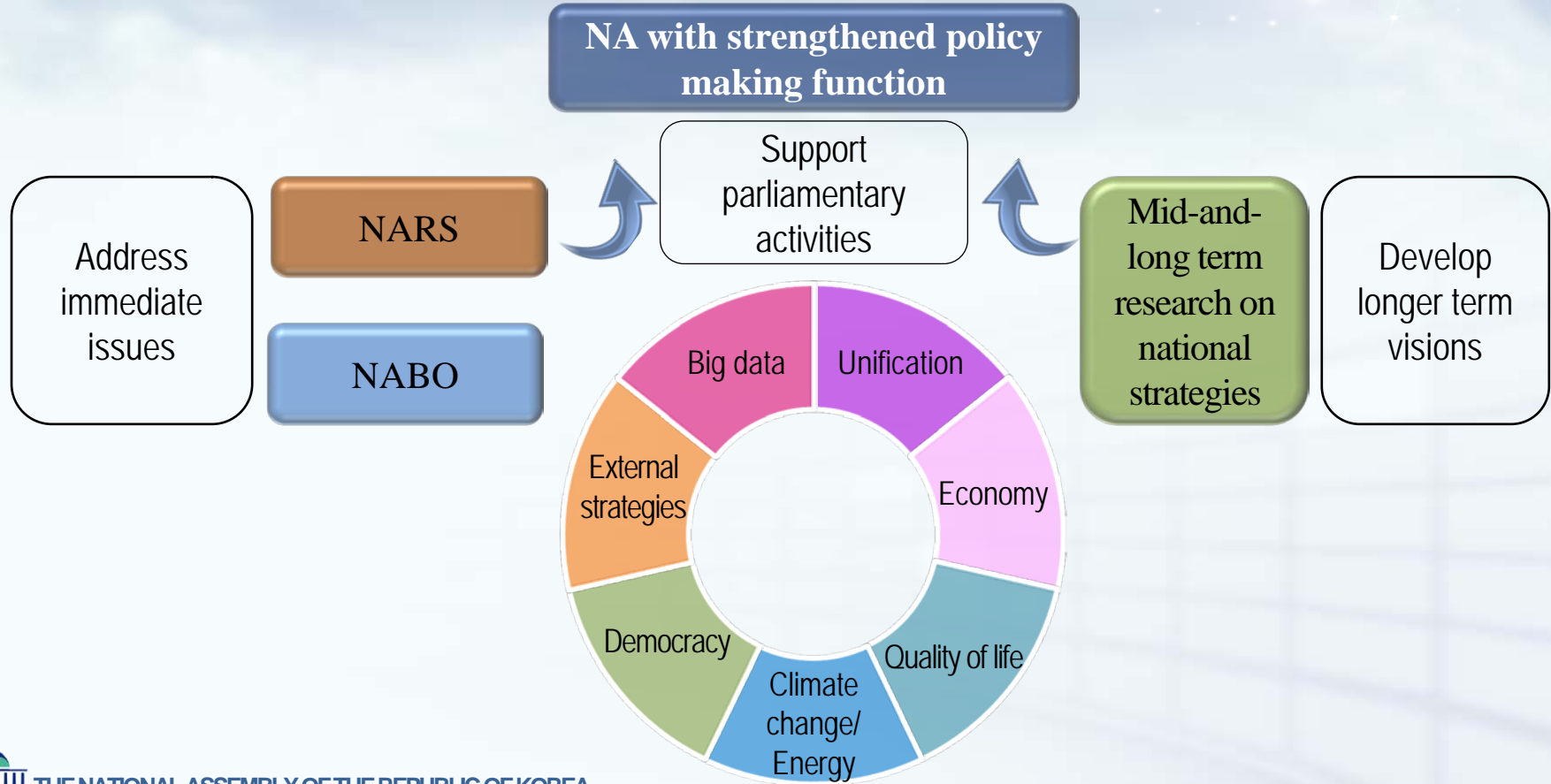
No. of legislative bills submitted by MPs during each NA term



# Promotion of parliamentary democracy



# The way forward – Futures research





**Thank you**